

## Mid-America Pipeline Replacement Project

Mid-America Pipeline Company, LLC (“MAPL”) is a subsidiary of Enterprise Products Partners L.P. The Mid-America Pipeline Replacement Project (“MAPL Replacement”) is for the replacement of 18 miles of an existing pipeline that transports refined products. The old pipeline (the one currently in use and being replaced) will be decommissioned by replacing the refined products with nitrogen, an inert, non-flammable gas which will ensure the pipeline is safe and stable. The project is located entirely within La Plata County, Colorado, and provides supply reliability and diversity to the historically underserved gasoline and diesel markets in the southwest United States.

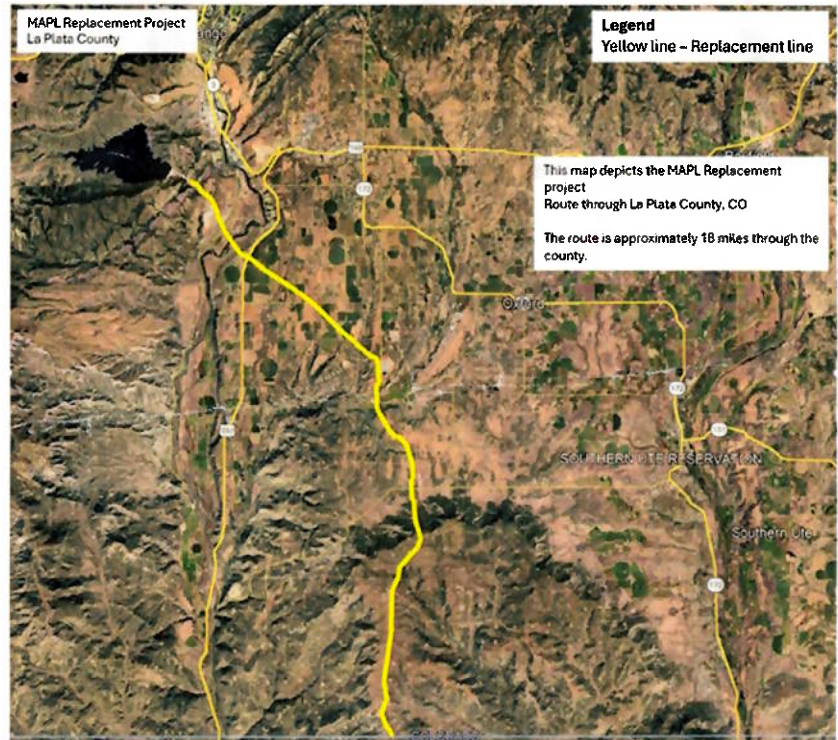
### PIPELINE CONSTRUCTION

Initial survey work, including both civil and environmental, to identify cultural and natural resources is the first step. Representatives will then begin discussions with affected landowners to ensure MAPL has the land rights necessary to begin construction.

The pipeline and associated surface sites will be designed and constructed in accordance with all applicable federal, state and local rules and regulations, special regulatory permit requirements, and applicable industry design and construction standards, specifications, and recommended practices.

All pipe and work associated with the MAPL Replacement complies with US Code of Federal Regulations, Title 49 Part 195-Transportation of Hazardous Liquids by Pipeline, Occupational Safety and Health Administration (“OSHA”) requirements, and Enterprise engineering, design and construction standards and specifications.

### La Plata County, Colorado



The replacement project will lay the new line primarily within the existing right-of-way (“ROW”) and will use temporary workspace negotiated with landowners for construction purposes. MAPL will clear the ROW and any temporary workspace of all vegetation and obstructions. The project will prepare and implement a Best Management Practices (BMP) Plan for construction activities, which specifies various BMPs (e.g. silt fencing, hay bales/straw wattles, and prevention practices) designed to avoid/minimize soil erosion and sedimentation of adjacent lands.

Once the right-of-way and workspaces are cleared and BMPs are in place, pipe stringing will commence within the right of way. The pipe will be welded together and x-rayed to ensure the welds meet stringent acceptance criteria. The trench will be excavated to a minimum of 36 inches depth of cover. Once the trench is excavated to the approved depth and the pipe is securely welded together, the pipe will be lowered into the trench.

Continued on back page.

Boring will be performed for road crossings and horizontal directional drilling (HDD) will be used for crossing some waterbodies to minimize the disturbance. Bores for roads will commence and terminate on private property outside road ROW and will be installed under roads at the requested depth. The HDD crossings are designed to meet or exceed industry standards.

Prior to commissioning, the pipeline shall be hydrostatically tested in accordance with 49 CFR Part 195 Subpart E.

After construction activities are completed, the pipeline ROW and any other areas impacted by the project will be backfilled and restored to historic contours as reasonably practicable. Restoration will take place based on native/historic use of the land.

### **PIPELINE MONITORING**

The original pipeline is currently and will remain monitored until it is decommissioned via a Supervisory Control and Data Acquisition (“SCADA”) system which is monitored 24/7/365 by trained and qualified personnel in a pipeline control center. This electronic surveillance system gathers such data as continuous pipeline pressures, volume and flow rates and the status of pumping equipment and valves. Both automated and manual valves are strategically placed along the pipeline system, allowing affected sections to be isolated, if necessary. In addition to the SCADA system and electronic leak detection software, the company regularly performs air, vehicle or foot patrol as a means of detecting signs of an issue. Internal inspections are conducted periodically by passing sophisticated computerized equipment called “smart pigs” through most of the company’s pipelines to confirm pipeline integrity. The pipeline will be included in the statewide “call-before-you-dig” program.

#### **MAPL Replacement Project Summary Points**

- Approximately 18-mile replacement project
- Expected in-service: Late 3<sup>rd</sup> Quarter 2027
- Expected project construction commencement: 2<sup>nd</sup> Quarter 2027
- Subject to extensive state and federal regulation and oversight
- Design meets or exceeds Best Industry Standards and Practices
- Operations monitored 24/7/365
- The company will perform all the required environmental surveys and assessments, including delineations of waters of the United States, cultural resources, and federally listed threatened / endangered species and their habitats.